

# Real Change for Autistic People and their Families



Despite dedicated legislation and successive Government strategies, autistic people's lives are not improving as they should. Exclusions of autistic pupils at school have more than doubled in the last decade, autistic people have one of the lowest employment rates of any group, and the proportion of people in mental health hospitals who are autistic is higher now than in 2015.

**The UK has to do better.**

There needs to be Real Change for Autistic People and their Families.

This will only be achieved by addressing the system-level barriers holding back progress.

There needs to be stronger accountability, better funding models, and culture change.



The Autism Alliance is calling on political parties to commit to Real Change in their manifestos, and a programme to deliver this change. This could include:

Early support for families, specialist care in communities

Timely access to autism assessment

Healthcare led by autistic people's needs

Education meeting autistic children and young people's needs

Fully supported transition to adulthood

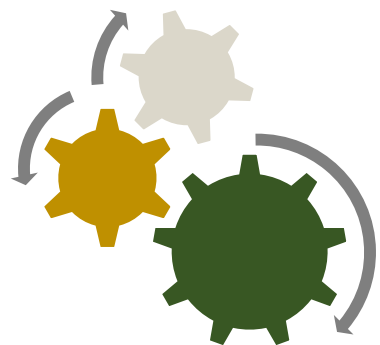
Autism awareness and acceptance across society



Autistic people represent a significant part of society. Recent research suggests that 1 in 67 people are autistic, and the number of people being identified as autistic is continuing to increase.

Autistic people face stark inequalities and poorer outcomes, across education, health, employment, and justice. They face significant, and often hidden challenges in their lives, and they and their families face a constant struggle to secure the right support. Autistic inequalities are compounded for autistic women and autistic people from Black, Asian and Minority Ethnic communities.

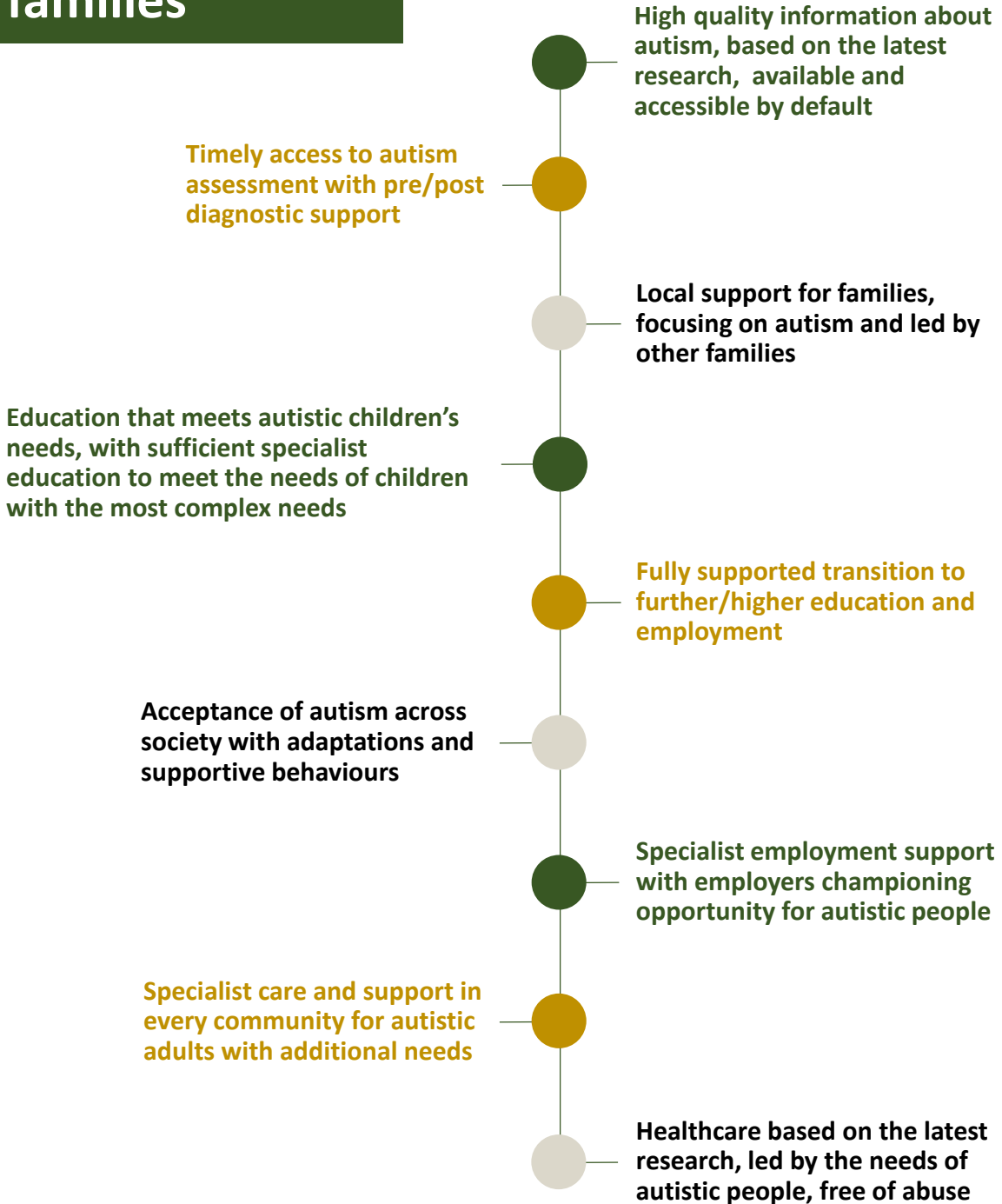
**A Real Change programme should focus on driving change in the outcomes that are most important to autistic people, and the voices of autistic people should be at the centre of reform.**



Across all stages of life, the system needs to work for autistic people and their families.



# A system that works for autistic people and their families



The Autism Alliance is a national partnership of charities that support autistic people and their families.  
 Website: [www.autism-alliance.org.uk](http://www.autism-alliance.org.uk)  
 Contact: [hello@autismalliance.org.uk](mailto:hello@autismalliance.org.uk)